

"Moskovskaya Matreshka"

Theme: Helpmate in 2

In the diagram position the solution ends with a mate by a linear piece (direct or battery). The twin is created from the mating position by adding a black unit between the mating unit and the black king. Sequential thematic twins are allowed, branching twins from a position with multiple solutions are also allowed.

Scope: Orthodox chess rules only

Judge: Valery Gurov

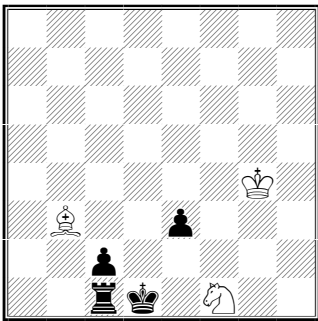
Prizes: Bottles of "Stolichnaya" and souvenirs "Matreshka"

Audience: Open to Congress Participants only

Deadline: August 27th (Wednesday) 9 p.m. in Berne to Valery Gurov or Georgy Evseev

Example:

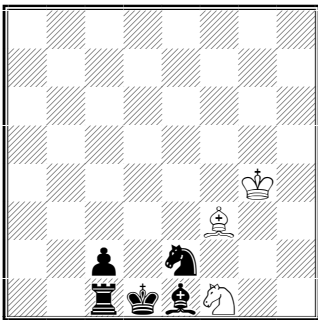
a)



h#2 3+4

1.e2 ♖d5 2.e1=♗ ♗f3#

b) mating position a) +bSe2



h#2 3+4

1. ♜a1 ♗d5 2.c1=♗ ♗b3#

Switchback