

## Champagne Tourney Bern 2014

The Tourney is opened only to Congress Participants

The Retro Tourney is declined in 2 sections (with separate awards)

A . ProofGames demonstrating Crosschecks

**Peter VAN DEN HEUVEL**

**T.T. Messigny 2001**

**4° Place**



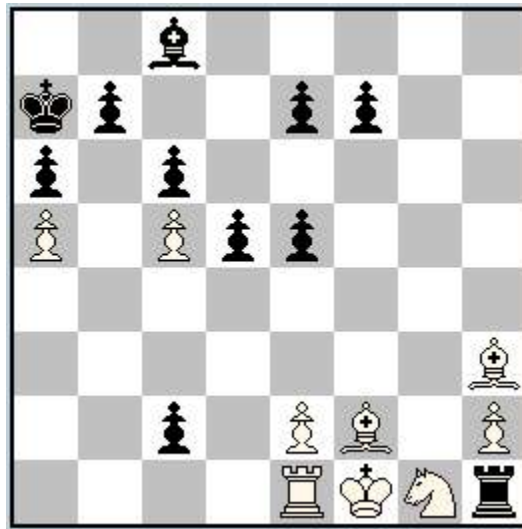
SPG 11,0 (15+15) C+

1.h4 g5 2.h×g5 h5 3.Th4 Th6 4.Tç4 Tç6  
5.é4 é6 6.Ké2 Ké7 7.Kd3 Kd6 8.Kç3 Lé7  
9.Kb4 Df8 10.é5+ Kd5+ 11.Tç5+ L×ç5+

B. in memory of Paul VALOIS and Uri AVNER

Selfmate or reflexmate with retro content

**Thomas R. DAWSON**  
**The Fairy Chess Review 1939**



r+2

(9+11)

Last move : d7-d5  
(otherwise L×h3# would have been forced by reflex condition)  
1.ç×d6 e.p.+! ~ 2.d×é7 L×h3‡

Fairy conditions allowed in both sections.

Maximum 3 entries per composer per section.

Maximum 1 non computer tested entry per composer in section A

Entries to Michel Caillaud by Wednesday 27th August 9:00 PM