

14th Japanese Sake Tourney

Theme: H#2 with the new fairy condition **Back-to-Back** (hereafter abbreviated as BTB).

Any other fairy pieces and/or conditions are not allowed.

Only computer-tested problems will be accepted. Popeye 4.65 or higher is needed for testing.

Judges: Tadashi Wakashima and other Japanese participants

Closing Date: 27th of August (Wednesday), 10 p.m.

E-mail entries should be sent to Tadashi Wakashima (tadashi@hcn.zaq.ne.jp) before 21th of August (Thursday).

Prizes: Bottles of Sake.

The tourney is open to everybody, but only congress participants can receive bottles.

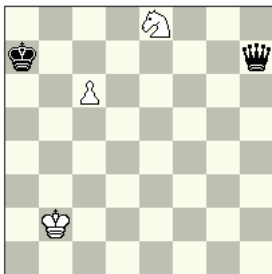
Definition

Back-to-Back (BTB): When pieces of opposite colors stand back-to-back with each other on the same file, they exchange their roles. P on the first rank cannot move. Any piece can make an en passant capture when it is given a power to move as P by BTB

Examples

Hitoshi Yanami

Original (C+)



H#2 2 sols

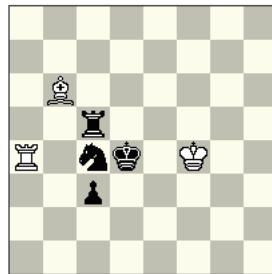
Back-to-Back

1.Kb6 Sd6 2.Qb7 cxb7#

1.Qe7 Sd7 2.Qc5 ca8=B#

Tadashi Wakashima

Original (C+)



H#2 b) Kf4→e2

Back-to-Back

a) 1.Sa3! Rxc5 2.Sc4 Rd7#

b) 1.Rb5! Be6 2.c2 Rxc4#

BTB specific pin-line openings.