

Offene Schweizerische Lösungsmeisterschaft vom 24. September 2016 in Bern

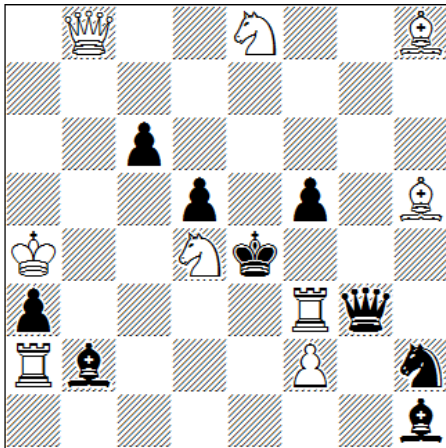
Runde 1:

#2

15 min

Name:

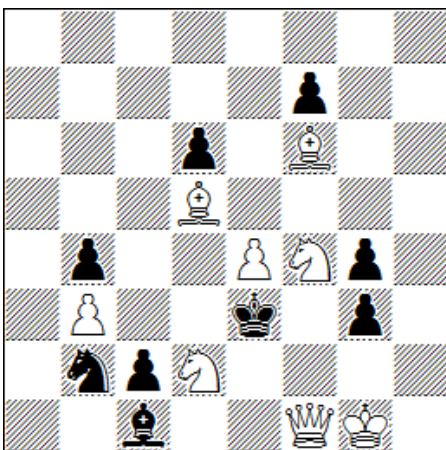
1



#2

9+9

2



#2

8+9

Offene Schweizerische Lösungsmeisterschaft vom 24. September 2016 in Bern

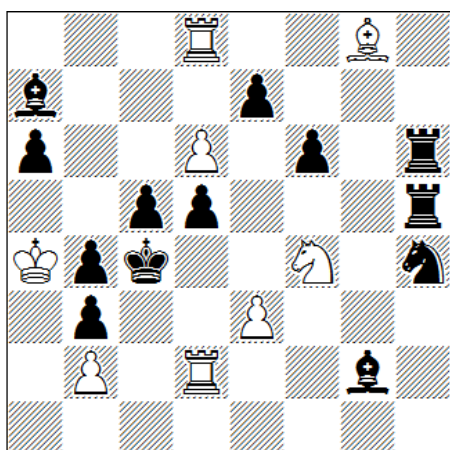
Runde 2:

#3

40 min

Name:

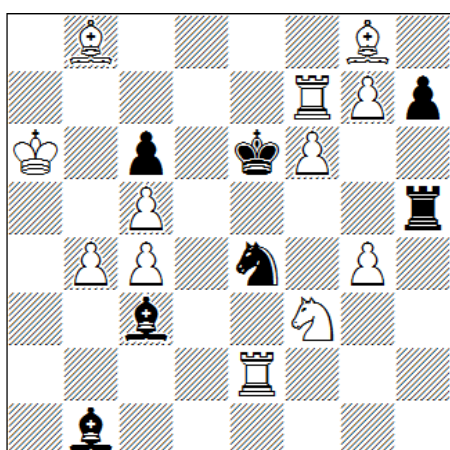
3



#3

8+13

4



#3

12+7

Offene Schweizerische Lösungsmeisterschaft vom 24. September 2016 in Bern

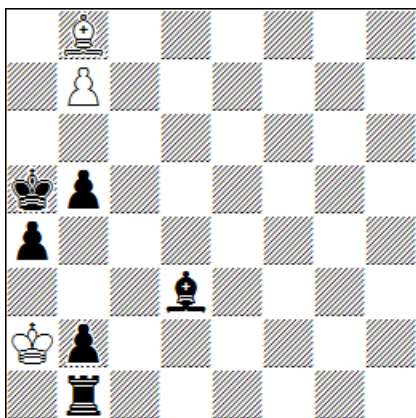
Runde 3:

eg

65 min

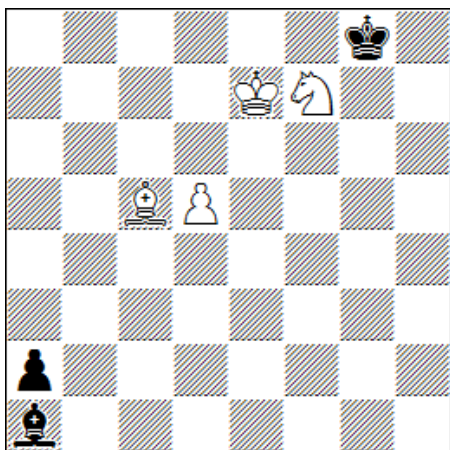
Name:

5



+ 3+6

6



= 4+3

Offene Schweizerische Lösungsmeisterschaft vom 24. September 2016 in Bern

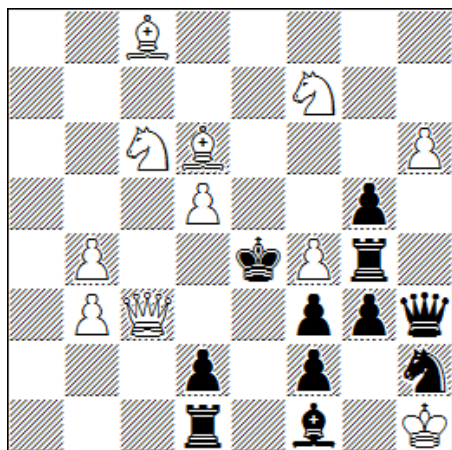
Runde 4:

S#

30 min

Name:

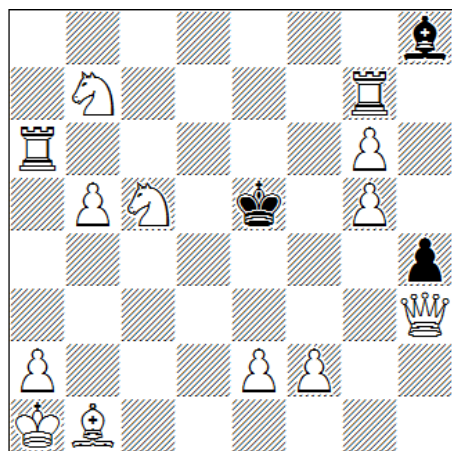
7



S#2

11+11

8



S#4

13+3

Offene Schweizerische Lösungsmeisterschaft vom 24. September 2016 in Bern

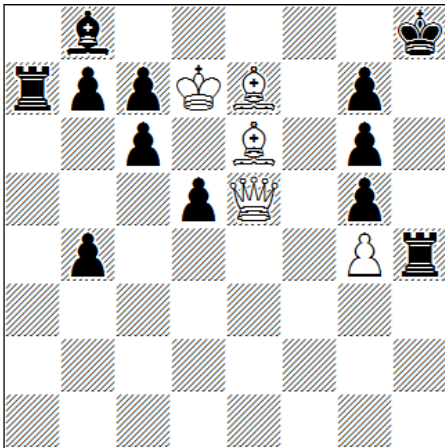
Runde 5:

n#

55 min

Name:

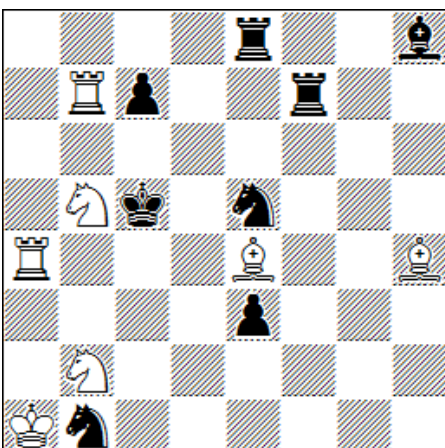
9



#4

5+12

10



#5

7+8

Offene Schweizerische Lösungsmeisterschaft vom 24. September 2016 in Bern

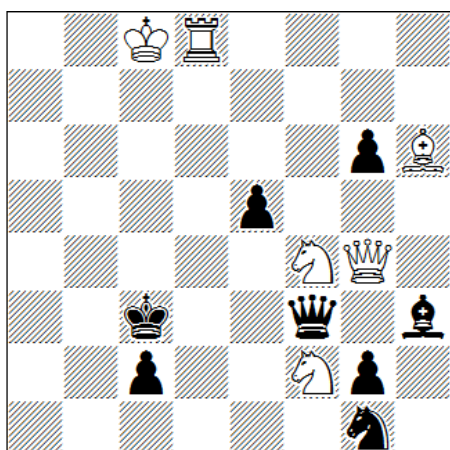
Runde 6:

H#

30 min

Name:

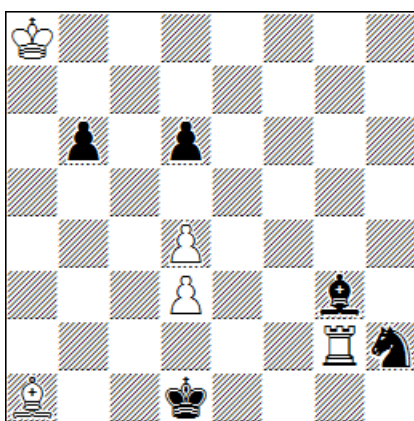
11



H#2 a) Diagr. 6+8

b) wSf2 -> b2

12



H#4,5 2 Lös. 5+5