



WORLD FEDERATION FOR CHESS COMPOSITION

10th WORLD CHESS COMPOSITION TOURNAMENT

ANNOUNCEMENT

March 2015

Invitation

The World Chess Composition Tournament is a long-established team event enabling composers from all over the world to compete at international level with new chess problems and studies on set themes. Nine such tournaments have been held to date, with enthusiastic worldwide participation. The 10th WCCT is now announced, and I have pleasure in inviting all countries affiliated to FIDE to register for this competition and take part in an event which promises to be even more popular and successful than its predecessors.

Harry Fougiaxis
President of the WFCC

Introduction by the WCCT Committee

The 10th WCCT will be the first tournament which is started without Uri Avner, who was the driving force behind several of the recent tournaments. I hope that this tournament will be equally successful with those that had taken place under the guidance of Uri.

The selection of themes for this tournament has been done under more severe time constraints than for the previous ones. I want to thank all the contributors for their goodwill and work.

I hope that the themes presented in the announcement will provide the necessary inspiration for the final result to be marvellous and to reflect the best our art can achieve. I also hope that this will be a good way to pay our last respect to Uri Avner.

I wish all composers, judges, and team leaders good luck and great achievements!

Registrations for the 10th WCCT should be submitted to me by **May 15th, 2015**, including the name, e-mail and postal address of the country's team leader.

Questions about the themes should be forwarded to the director (by the team leaders only). The director will consult the WCCT Committee and then provide answers. All team captains, please make sure that you and your country's composers are aware of the general rules of the 10th WCCT.

The closing date for entries in all sections is **May 1th, 2016**.

All mail relating to 10th WCCT should be sent to the e-mail address 10wcct@gmail.com.

Georgy Evseev
Spokesman of WCCT Committee
Director of the 10th WCCT
March 2015

WCCT General Rules

The General Rules were accepted at Pula in September 1972 by the Permanent Commission of the FIDE for Chess Composition (PCCC) and modified and added to in September 1978 in Canterbury, in August 1984 in Sarajevo, in September 1990 in Benidorm, in August 1991 in Rotterdam and in August/September 1993 in Bratislava. Further amendments have been made in the light of changes approved at Pula 2000, Wageningen 2001, Eretria 2005, Crete 2010, and Bern 2014 (by the World Federation for Chess Composition, the follow-up organization of the PCCC).

1. The WCCT (World Chess Composition Tournament) is organised with the authority of the WFCC.
2. The WCCT is open to all member federations of the FIDE (hereinafter called "participating countries"). The member federations of the FIDE are to be given adequate opportunity to notify in advance their intention to participate.
3. The WCCT includes the following sections: A) Twomovers, B) Threemovers, C) Moremovers, D) Endgame studies, E) Helpmates, F) Selfmates, G) Fairies, H) Retros.
4. The WFCC regulates the procedure for proposing and selecting themes, approves the procedure to be used for judging and appoints the Tournament Director (hereinafter called "Director"). The final choice of themes and of countries to be asked to judge each section (hereinafter called "judging countries") lies with the WFCC.
5. Constructional tasks and any theme stipulating a limit to the number of pieces should be avoided. In the orthodox sections (A-F, H), compositions in twin or duplex form and/or with more than one solution are acceptable only if so specified in the definitions of the prescribed themes. Promoted pieces in the diagram position are allowed only if they are substitutes for captured pieces of the same type. It should be noted that a King's Bishop cannot be a substitute for a Queen's Bishop or *vice versa*. In section G, fairy pieces or fairy conditions which do not exactly correspond with the theme definitions will not be accepted.
6. A dated announcement of the WCCT will be made, setting out the rules and providing theme definitions with diagrammed illustrations. There should be at least 10 months between the date of the announcement and the closing date for entries. The closing date is to be stated precisely in the announcement and cannot be changed.
7. The official documents (announcement and award) are to be written in at least one of the official languages of the FIDE.
8. Each participating country appoints a team leader. The Director cannot act as a team leader.
9. The organising country may participate in the WCCT provided that its entries are sent in a sealed form by the team leader to the appointed WFCC Presidium member two weeks before the closing date.
10. Three compositions in each of the eight sections are allowed from each participating country. Any one composer may participate with three compositions in each section. Joint compositions are permitted.
11. Entries are to be submitted on uniform diagrams with the section, the composer's name and country, and the full solution all clearly written on the same page. Algebraic notation is to be used.

12. The entries are to be acknowledged by the Director, who will compile them into a document with diagrams and full solutions, but without composers' names or countries. Each diagram will bear a number for reference purposes. The document will be sent to the team leaders for checking, and the Director must be informed within three months about any misprints or claims of anticipation or unsoundness.
13. The Director will inform all judging countries and team leaders of any misprints, any entries deemed to be unsound, and any claims of anticipation, so that six weeks may be given for checking these claims.
14. Using a scale of 0 to 4 with the step of 0.2 points, each judging country will allocate points to all compositions in the section which it has agreed to judge, except for the entries of the judging country itself. Compositions which are sound, thematic and not anticipated should receive at least 0.2 points. The judging countries must explain their reason(s) for giving a score of 0 points to any composition. Comments on all compositions are welcome and are strongly recommended in the case of those with a score of 2.6 points or more.
15. If a judging country does not make its award by the date prescribed in the Tournament schedule, or in the case of other irregularities, the Director may appoint some other judging country, making use in the first instance of the list of reserves drawn up by the WCCT Committee. The WFCC Presidium shall be informed.
16. The Director will calculate the total points gained by each composition. If a composition has been judged by five judging countries, the Director discards the highest and the lowest marks and sums the remaining three. In calculating the score of the entries of judging countries in the section(s) that the countries are judging, the highest and lowest marks will be discarded and the score will be 1.5 times the sum of the two middle marks. If a composition has received a zero mark from two or more judging countries, it is excluded from the tournament and receives no points.
17. The Director will order the entries in each section on the basis of their score. In each section, only the two highest-placed entries from each participating country will be taken into consideration in calculating the country's tournament score. The overall winner of the Tournament is the country with the highest total score from seven best sections out of eight for this country.
18. In each section the twenty highest-placed problems (hereinafter called the "top 20") will be printed on diagrams with full solutions in the final awards document. If several entries are ranked equally and share the 20th place, all of them will be printed on diagrams. If the third-placed entry of any country belongs to the "top 20" list, it will be printed in the final awards document, even though it does not contribute to that country's score.
19. In each section the entries scoring points for a participating country, but not belonging to the "top 20" list, will be mentioned in the final awards document only by means of their reference number, composer and country names, score and place. These compositions are to be considered as published. Any unpublished entries will be available to their composers for publication elsewhere, once the final awards document has appeared.
20. The final awards document will be made available to every participating country and composer.
21. The three countries with the highest total scores and the composers of the three highest-placed entries in each section will be awarded certificates of honour.

Annex to WCCT General Rules

This annex aims to provide clarification of some of the WCCT General Rules and, for the 10th WCCT in particular, is to be considered as an integral part of those Rules. The paragraph numbering corresponds to that used in the General Rules.

Paragraph #7: The announcement and the award will be written in the English language. Team leaders and judging countries are kindly asked also to use only English, including any comments to the problems. Director keeps the right to translate the country's comments into English (including automatic translation means, like Google translator) to ensure anonymity of entries. Communication between the Director, the team leaders and the judging countries will be via e-mail.

Paragraph #9: The team leader of the organising country will send the entries to the WFCC President in a password-protected ZIP archive. The Director will ask the team leader for the password upon receipt of the file with the entries.

Paragraph #10: Even though the submission of versions is not encouraged, it is not forbidden. Similar problems by different countries are all legitimate; they are not considered to be versions and are not subject to the procedure described below. The procedure for versions in the current tournament is as in the previous WCCT:

- a) Every participating country must inform the Director if it submits groups of 2 or 3 problems which are versions of each other.
- b) The judging countries do not receive this information. They allocate points to all the entries as if there were no versions.
- c) Among versions submitted by the same country only the highest-graded one is kept in the award and may score points for that country.
- d) After the judging countries have submitted their marks, the Director informs them of seemingly undeclared versions which he has detected among the entries submitted by any country.
- e) The judging countries in the relevant section must then state whether they consider these entries to be versions of each other. If there is a majority decision that an entry is a version, action is taken according paragraph (c). If there is a tie, the Director must exercise a casting vote and inform the judging countries of his decision.

Paragraph #11: The team leaders will submit the entries in electronic form. Acceptable file formats are: WinChloe, Fancy CCV, Problemiste PBM, MatPlus Librarian PBZ/PBX, Microsoft Word DOC and DOCX, OpenOffice ODT, Rich text format RTF and Adobe Acrobat PDF. For section D (Endgame studies) in particular, the entries must be submitted in PGN format. If the entries are submitted in DOC, DOCX, ODT or RTF format, team leaders must also include in these documents, or in separate plain text files, the positions in standard FEN (preferably) or algebraic notation. If the entries are submitted in PDF format, team leaders must provide the positions in separate plain text files. Acceptable notations are: FEN (KQRBNP), English (KQRBSP), French (RDTFCP), German (KDTLSB) and FIDE (KDTLSP).

Paragraph #12: The document including all the entries will be made available by the Director in PDF format. The WCCT Committee considers that no printed booklet is necessary.

Paragraph #14: Each judging country is free to determine its own judging method, whether it uses one, two or more judges. To reach the best result, it is recommended that a country's judges work in consultation with each other. The country should itself resolve any dispute among the judges; for example an appointed person in charge may make the final decision. It is not required for judges to be international FIDE judges. The judging countries are trusted to appoint their best experts to carry out the work and they are not obliged to provide the names of the persons who have made the award.

Guidelines for the allocation of points:

Points	Description
4.0	An outstanding problem: an accurate and intensive rendering of the set theme, without blemishes in any of the main lines, and showing originality and flair. Perfect construction and economy.
3.0	<i>Either:</i> a very good problem showing the theme clearly but perhaps not intensively or very originally <i>Or:</i> a task rendering of the theme which does not reach the highest artistic standard. In either case, good construction and economy.
2.0	A good problem, very likely worth an honourable mention or commendation in a reasonably strong tourney, but not a very intensive rendering of the theme, and perhaps not very original. Adequate to good construction and economy.
1.0	A very ordinary piece of work, typical of many average columns but hardly up to award standard. Adequate construction and economy.
0.0	Unsound, unthematic or fully anticipated.

Paragraph #18: The final awards document will be made available by the Director in PDF format and as a printed booklet.

Timetable

March 10st, 2015	Announcement
May 15th, 2015	Registration
May 1st, 2016	Deadline for submitting entries
July 1st, 2016	Document with entries
October 1st, 2016	Claims
November 1st, 2016	Distribution of claims
January 1st, 2017	Replies to claims
February 1st, 2017	Distribution of replies to claims
June 1st, 2017	Judging completed
October 1st, 2017	Award booklet
WFCC Meeting, 2017	Celebration of the winners

Editors of chess magazines are asked not to publish originals with themes of this tournament before the closing date of 10th WCCT: **May 1st, 2016**

SECTION A: TWOMOVERS

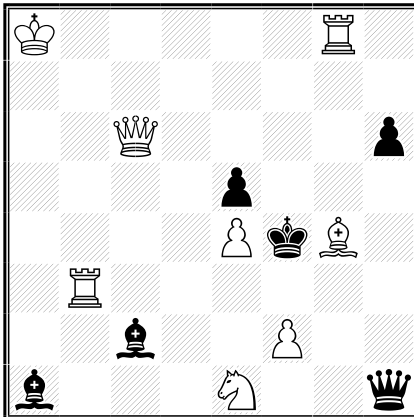
Judging countries: Croatia, Great Britain, Israel, Serbia, Ukraine

Reserves: Slovakia

Theme: Anticipatory unpin of a white piece. In the diagram position a white piece **A** is not pinned. The first move of a try and/or solution ensures that this white piece **A** is not pinned later, in order to provide a mate.

Francisco Salazar

6 HM Probleemblad 1976



Example A1

1.Rb4? [2.Qf6#]
 1...Bxe4 2.Sd3#
 1...Qxe4 2.Sg2#
 but 1...Bd4!

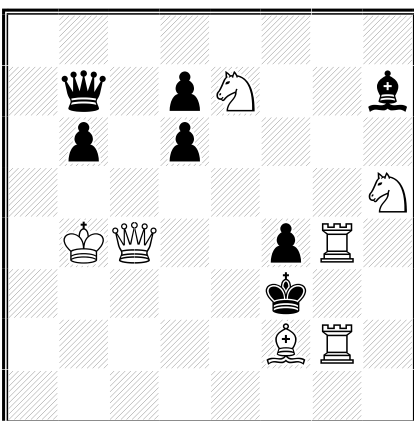
1.Rb7! [2.Rf7#]
1...Bxe4 2.Qc1#
1...Qxe4 2.Qxh6#

≠2

(8+6)

Vladimir Tikhankov

3 HM Odessa 1989



Example A2

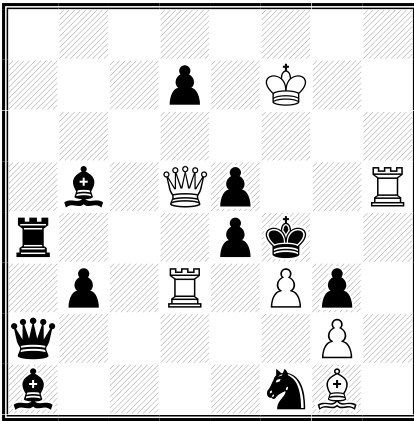
1.Bd4? [2.Qe2#]
 1...Qe4 2.Qf1#
 1...Ke4 2.Rxf4#
 but 1...Qa6!

1.Qf1! [2.Rxf4#]
 1...Ke4 2.Qe2#
 1...Qe4+ 2.Bd4#

≠2

(7+7)

Thomas Maeder
Reto Aschwanden
 3 Pr The Problemist 1993-I



±2 (7+11)

Example A3

1.Bd4? [2.Qxe5 **A**,Qxe4± **B**]

1...b2 **a** 2.Bxe5±

but 1...Bc4! **b**

1.Rd4? [2.Qxe5 **A**,Qxe4± **B**]

1...Bc4 **b** 2.Rxe4±

but 1...b2! **a**

1.Kg7! [2.Qf7±]

1...b2 a 2.Qxe5± A

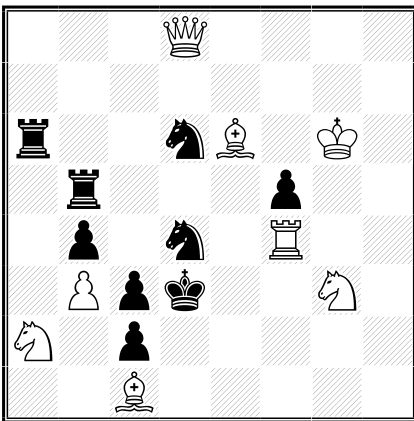
1...Bc4 b 2.Qxe4± B

1...Ra6 2.Qxe4±

1...Se3 2.Bxe3±

1...exf3 2.Qxf3±

I.N. Gazhimon
 Sinfonie Scacchistiche 1969



±2 (8+9)

Example A4

1...S4~ **a** 2.Bc4± **A**

1...Se4 **b** 2.Rf3± **B**

1.Qf6! [2.Rxd4,Qxd4±]

1...S4~ **a** 2.Rf3± **B**

1...Se4 b 2.Bc4± A

1...Re5,Rd5 2.Sxb4±

SECTION B: THREEMOVERS

Judging countries: Belarus, Croatia, India, Sweden, Switzerland

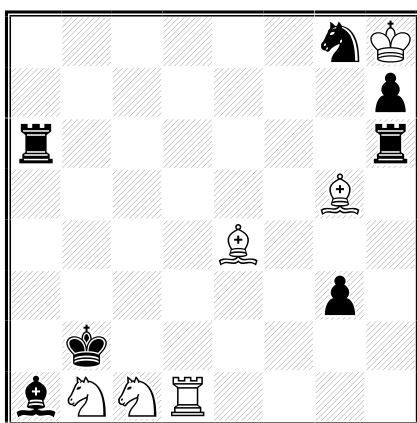
Reserves: France

Theme: In a directmate in 3 moves in the same variation the black defensive motif and the white response are of the same tactical nature. For example, if Black is making a square evacuation defense then White is making a square evacuation on second move. Black unpin is replied by white unpin, black flight provision (unblock, capture or interference) is replied by a flight provision on W2 move.

Purely geometrical unity (like in magnet or monkey theme) is not considered thematic. Zugzwang problems are not thematic for this section.

Otto Wurzburg

The Minneapolis Journal 1934



Example B1

1.Rd3! [2.Rb3#]

1...Kc2+ 2.Rd4+ Kb2 3.Rb4#

1...Kxb1+ 2.Rc3+ Kb2 3.Rb3#

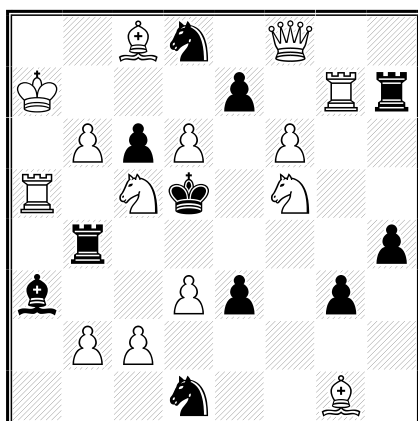
Battery check vs. Battery check

≠3

(6+7)

Alexandre Kuzovkov

1 Pr Probleemblad 1991



Example B2

1.Rg5! [2.Sxe3+ Kxd6/Kd4 3.Qxd8/Sxd1#]

1...e6+ 2.Sd7+ Rb5/c5 3.c4/Rxc5#

1...e5+ 2.Sb7+ Rb5/c5 3.c4/Rxc5#

1...exd6+ 2.Sg7+ Kd4 3.Qxd6#

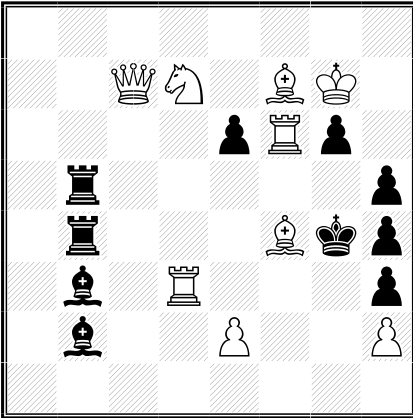
1...exf6+ 2.Se7+ Kxd6/Kd4 3.Qxd8/Qxf6#

Battery check vs. Battery check

≠3

(14+11)

Jean-Marc Loustau
1 Pr Phenix 1995-96 (v)



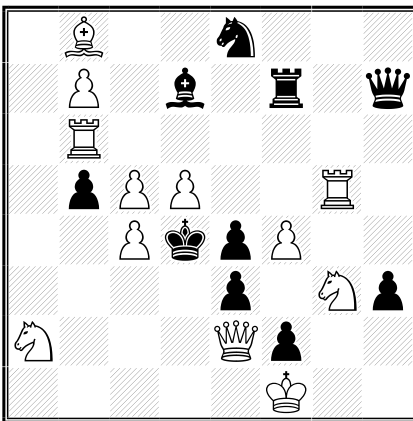
Example B3

1.Bh6! [2.Rg3+ hxg3 3.Qxg3#]
1...Be5 2.Rd5 [3.Sxe5,Bxe6#] Bxf6+ 3.Sxf6#
1...Re5 2.Rd4+ Rxd4/Bxd4 3.Sxe5/Rf4#

Interference vs. Interference

≠3 (9+10)

Milan Vukcevic
2 Pr Schach-Echo 1976



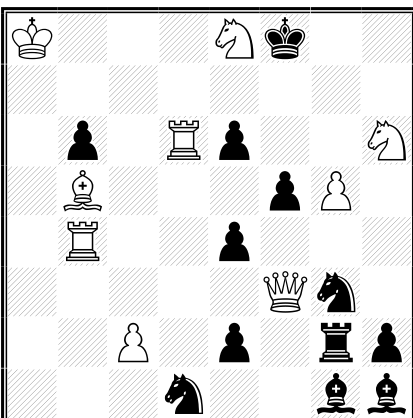
Example B4

1.Ba7! [2.Qb2+ Kxc5/Kxc4 3.Rc6/Qc3#]
1...Qf5 2.Rf6 Bc6 3.Sxf5#
1...Rf5 2.Re6 Qe7 3.Sxf5#
1...Bf5 2.Rbg6 Rxb7 3.Sxf5#

Interference vs. Interference

≠3 (12+10)

Alexandre Feoktistov
1 HM Leninskoe plemya 1970



Example B5

1.Qa3! [2.Qa7 [3.Qf7/Qg7#]]
1...Rf2 2.Rb3 e3+ 3.Rd5#
1...e3 2.Rd2 Rf2+ 3.Re4#

Halfbattery check vs. Halfbattery check

≠3 (9+12)

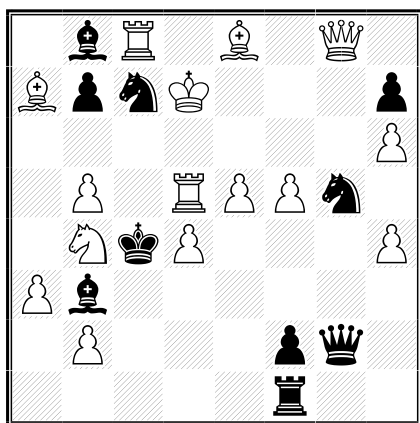
SECTION C: MOREMOVERS

Judging countries: Armenia, Belarus, Finland, Sweden, Ukraine

Reserves: Germany

Theme: In a variation of a moremover ($\neq n, n \geq 4$) there is a sequential play of at least two different direct white batteries. Two (or more) different rear battery pieces must be used. In the diagram position there should not be more than one white battery aimed at the black king.

Yakov Vladimirov
1 Pr Odessa 1964



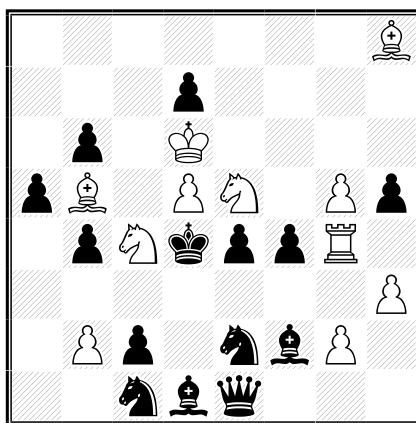
$\neq 4$

(15+10)

$\neq 7$

Yakov Vladimirov

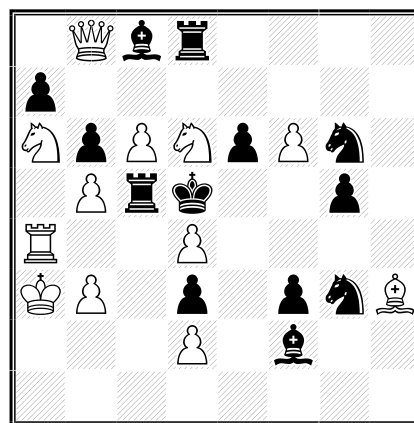
2 Pr Shakhmatnaya Moskva
1966



(11+14)

Wieland Bruch

Siegfried Brehmer
2 Pr Die Schwalbe 1994



$\neq 7$

(12+13)

Example C1 (Vladimirov)

1.Kd8! [2.Rd6+ Se6+/Sf7+ 3.QxS+ Qd5 4.Qxd5 \neq]

1...Sg~ **2.Rd7+** Kxb5 **3.Rd5+** Kc4 4.Bb5 \neq

1...Se4 **2.Rc5+** Kxd4 **3.Rd5+** Kc4 4.Rd4 \neq

1...Sge6+ 2.Qxe6 Qg8 **3.Rc5+** Kxd4 **4.Rc4 \neq**

1...Sf7+ 2.Qxf7 Qg8 3.Qxc7+ Bxc7+ 4.Rxc7 \neq

Example C2 (Vladimirov)

1.Rh4! [2.Sxd7+ Kd3 3.Sde5+ Kd4 4.Kc6 Qg1 **5.Sf3+** Kd3 **6.Sd6+** Ke3 7.Sf5 \neq ;

4... Bg3 **5.Sg4+** Kd3 **6.Sd6+** Kd2 7.Sxe4 \neq]

1...Bg3/Bxh4 **2.Sg4+** Kd3 **3.Sxb6+** Kd2 4.Sc4+ Kd3 5.Sge5+ Kd4 6.Sxd7+ Kd3 7.Sc5 \neq

1...Qg1 **2.Sf3+** Kd3 **3.Sxa5+** Ke3 4.Sc4+ Kd3 5.Sfe5+ Kd4 6.Sc6+ Kd3 7.Sxb4 \neq

Example C3 (Bruch, Brehmer)

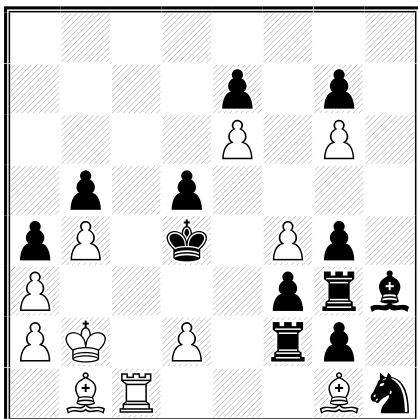
1.Sc7+? 1.Sb4+?

1.Bg4! [2.Bxf3+ Se4 3.Bxe4 \neq]

1...Se4 2.Sc7+ Kxd6 **3.Sa6+** Kd5 4.Sb4+ Kxd4 **5.Sc2+** Kd5 6.Rd4+ Bxd4 7.Sb4 \neq

1...e5 2.Sb4+ Kxd4 **3.Sa6+** Kd5 4.Sc7+ Kxd6 **5.Se8+** Kd5 6.Qd6+ Rxd6 7.Sc7 \neq

Bo Lindgren
2 Pr Probleemblad 2000

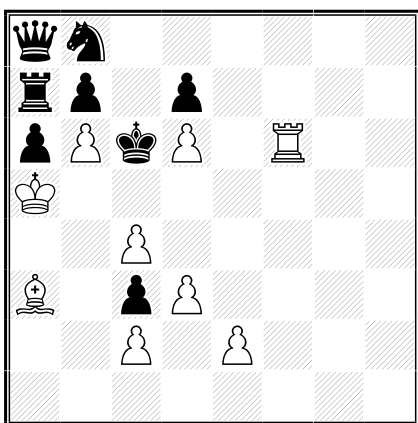


Example C4

1.Rc2? Kd3!, 1. Kc2? Ke4!
1.Bc2! Kc4 **2.Bf5+** Kd4 3.Kc2 Kc4 **4.Kd1+** Kd4 5.Bc2 Kc4
6.Bb1+ Kd4 7.Rc2 Kd3 **8.Rc5+** Kd4 9.Kc2 Ke4 **10.Kc3+** Kxf4
 11.Rxd5 Rxd2 12.Rf5‡

‡12 (11+13)

Yakov Vladimirov
1 Pr Memorial N. Macleod 1994

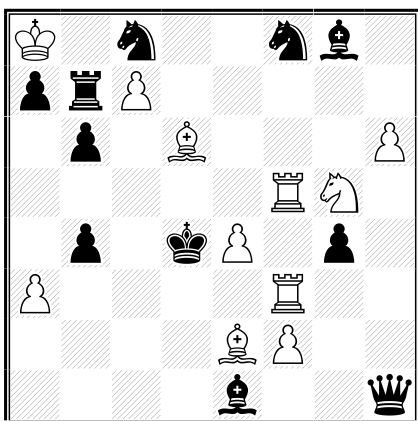


Example C5

1.Bc1 Kc5 2.Be3+ Kc6 3.Bf4 Kc5 4.Rf5+ Kc6 5.Be5 Kc5
6.Bh2+ Kc6 7.Rf6 Kc5 8.Bg1+ Kc6 9.e3 Kc5 **10.e4+** Kc6
 11.Bh2 Kc5 12.Rf5+ Kc6 13.e5 Kc5 14.Bg1+ Kc6 15.Rf2 Kc5
16.Rf8+ Kc6 17.Rc8‡

‡17 (9+8)

Marcel Tribowski
Yuri Arefiev
2 Pr Probleemblad 1996



Example C6

1.h7! [2.hxg8Q]
 1...Qxh7 2.Rd3+ Kc4 **3.Re3+** Kd4 4.Bb5 Qh3 5.Be5+ Kc5
6.Bg3+ Kd4 7.Rd3‡
 1...Sxh7 2.Be5+ Kc5 **3.Bf4+** Kd4 4.Rb5 Qh2 5.Rd3+ Kc4
6.Rg3+ Kd4 7.Be5‡

‡7 (11+11)

SECTION D: ENDGAME STUDIES

Judging countries: Finland, Germany, Great Britain, Israel, Netherlands

Reserves: Armenia

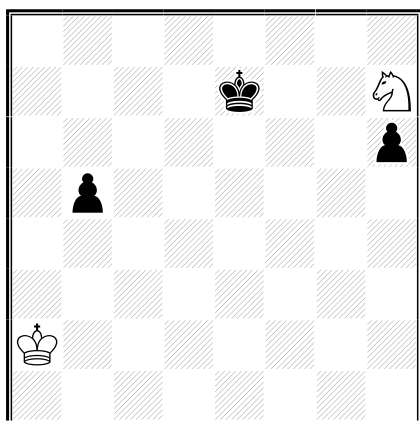
Theme: A logical study with the foresight theme. In a win or a draw study, there is at least one logical try. In this try a critical position **B** occurs that is very similar to a critical position **A** in the solution, except for a small difference. This difference could e.g. be a change in the position of a certain piece, missing/extra material, shifted positions, etc.

Studies in which the critical positions are based on a reciprocal zugzwang (i.e. the difference is that position **A** has BTM and position **B** has WTM) are non-thematic. Further, studies that only feature the 7th WCCT theme as the foresight theme (passive removal of a white piece as a *Vorplan* and returning to the position and executing the main plan) are also non-thematic for this tourney.

Judges and composers are advised to let artistic content prevail over numbers (number of moves, multiple positions A/B, tasks).

David Gurgenidze

64 1970



=

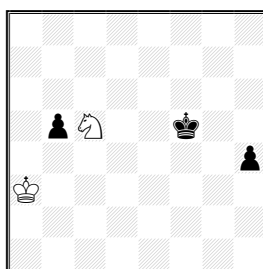
(2+3)

Example D1

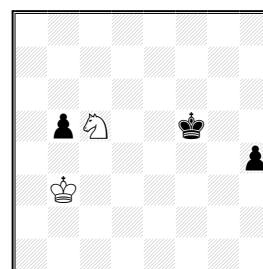
1.Ka3 Ke6 2.Sf8+ Kf5 3.Sd7 h5 4.Sc5 h4 **A** 5.Sb3 h3
6.Sd2 h2 7.Sf1 h1=Q 8.Sg3+ =

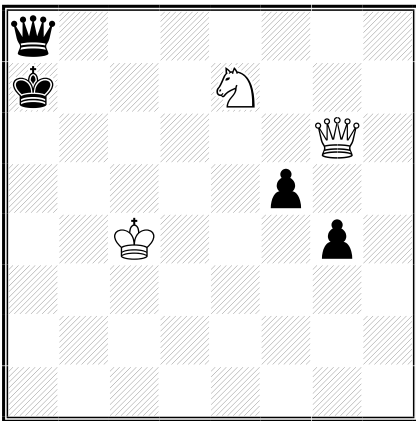
Thematic try: 1.Kb3? Ke6 2.Sf8+ Kf5 3.Sd7 h5 4.Sc5 h4 **B** 5.Sd3
h3 6.Sf2 h2 ♣

Position A:



Position B:





+

(3+4)

Example D2

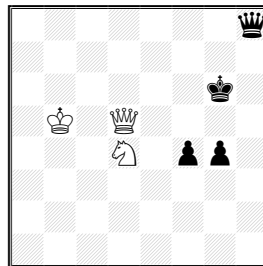
1.Kc5 Qf8 2.Qe6 Kb7 3.Qd6 Ka8 4.Qd7 zz, and:

4...f4 5.Kb5 Qh8 6.Qc6+ (Qd5+) Kb8 7.Qb6+ (Qd6+) Ka8
 8.Qa6+ Kb8 9.Sc6+ Kc7 10.Qa7+ Kd6 11.Qc5+ Ke6 12.Sd4+ Kf7
 13.Qd5+ Kg6 **A1** 14.Qe4+ Kf7 15.Qe6+ Kf8 16.Qc8+ Kg7
 17.Se6+ Kh7 18.Qc2+ Kh6 19.Qh2+ ±, or:

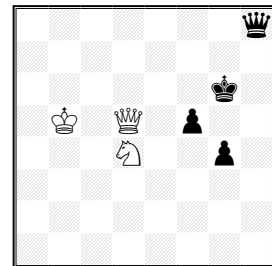
4...g3 5.Kb5 Qh8 6.Qc6+ (Qd5+) Kb8 7.Qb6+ (Qd6+) Ka8
 8.Qa6+ Kb8 9.Sc6+ Kc7 10.Qa7+ Kd6 11.Qc5+ Ke6 12.Sd4+ Kf7
 13.Qd5+ Kg6 14.Qxf5+ Kh6 **A2** 15.Qh3+ Kg7 16.Sf5+ Kg8
 17.Qg4+ Kf8 18.Qb4+ Kf7 19.Qc4+ Kg6 20.Se7+ Kg7 21.Qd4+
 Kh7 22.Qh4+ Kg7 23.Sf5+ Kg8 24.Qc4+ Kf8 25.Qc8+ ±

Thematic try: 2.Qb6+? Ka8 3.Qc6+ Kb8 4.Qd6+ Kb7 zz 5.Qd7+
 Ka8 zz 6.Kb5 Qh8 7.Qd5+ Kb8 8.Qd6+ Kb7 9.Qa6+ Kb8 10.Sc6+
 Kc7 11.Qa7+ Kd6 12.Qc5+ Ke6 13.Sd4+ Kf7 14.Qd5+ Kg6 **B1**
 15.Qxf5+ Kh6 **B2** 16.Qf4+ Kh7 17.Qe4+ Kg8 18.Qe8+ Kh7
 19.Qh5+ Kg8 20.Qd5+ Kh7 = The wS cannot play to e6 with
 check.

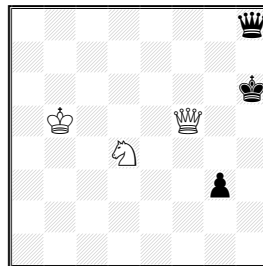
Position A1:



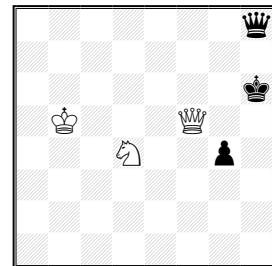
Position B1:



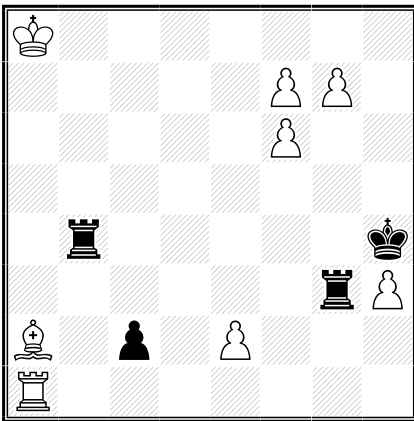
Position A2:



Position B2:



Nikolai Ryabinin
1 Pr Zadachi i Etyudy 1998



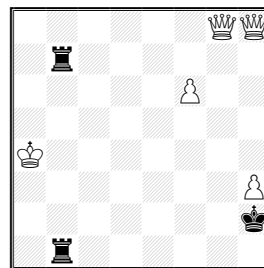
+ (8+4)

Example D3

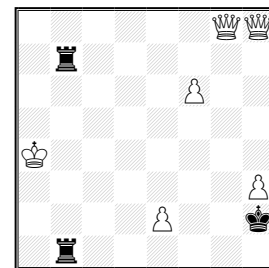
1.e3 Rxe3 2.Bb3 c1Q 3.Rxc1 Rxb3 4.Rc7 Rb8+ 5.Ka7 R8b4
6.Rc6 Rb7+ 7.Ka6 R7b4 8.Rc5 Rb6+ 9.Ka5 Rb7 10.Rc4+ Kh5
11.Ka4 Rb1 12.Rc5+ Kh4 13.Rb5 R1xb5 14.f8Q Rb1 15.Qh8+
Kg3 16.g8Q+ Kh2 **A** 17.Qa2+ ±

Thematic try: 1.Bb3? c1Q 2.Rxc1 Rgxb3 3.Rc7 Rb8+ 4.Ka7 R8b4
5.Rc6 Rb7+ 6.Ka6 R7b4 7.Rc5 Rb6+ 8.Ka5 Rb7 9.Rc4+ Kh5
10.Ka4 Rb1 11.Rc5+ Kh4 12.Rb5 R1xb5 13.f8Q Rb1 14.Qh8+
Kg3 15.g8Q+ Kh2 **B** 16.Qb3 R1xb3 17.f7 R7b4+ 18.Ka5 Rb5+
19.Ka6 Rb6+ 20.Ka7 Rb7+ 21.Ka8 R7b5 =

Position A:

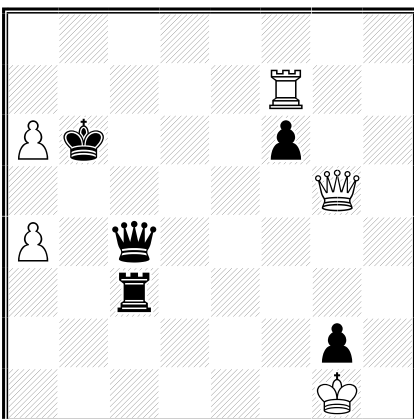


Position B:



Yehuda Hoch

1 Pr Memorial J.P. Mandil,
Problemas 1980-81



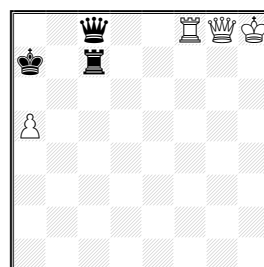
+ (9+9)

Example D4

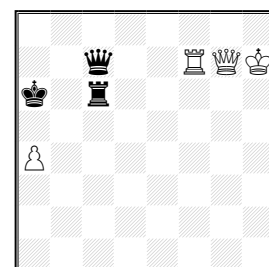
1.a5+ Kxa6 2.Rxf6+ Ka7 3.Qg7+ Qc7 4.Rf7 Rc1+ 5.Kxg2 Rc2+
6.Kf3 Rc3+ 7.Ke4 Rc4+ 8.Kd5 Rc5+ 9.Ke6 Rc6+ 10.Kf5 Rc5+
11.Kg6 Rc6+ 12.Kh7 Ka8 13.Qg8+ Qc8 14.Rf8 Rc7+ 15.Kh8 Ka7
A 16.Qg1+! ± (avoiding 16.Rxc8? Rxc8 17.Qxc8 =)

Thematic try: 1.Rxf6+? Ka7 2.Qg7+ Qc7 3.Rf7 Rc1+ 4.Kxg2
Rc2+ 5.Kf3 Rc3+ 6.Ke4 Rc4+ 7.Kd5 Rc5+ 8.Ke6 Rc6+ 9.Kf5 Rc5+
10.Kg6 Rc6+ 11.Kh7 Kxa6 **B** 12.Rxc7 Rxc7 13.Qxc7 =

Position A:



Position B:



SECTION E: HELPMATES

Judging countries: Greece, India, Israel, Serbia, Slovakia

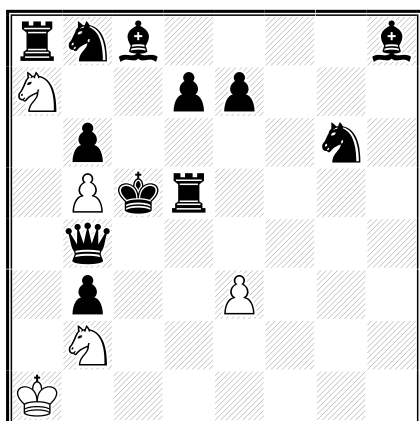
Reserves: Ukraine

Theme: In each line of play of a helpmate in 3 moves, Black gives a battery check to the white king.

At least two lines of play are required. Set play, multi-solutions and twins are allowed, but not duplex, Polish-type twins (all pieces change color) or zero-positions.

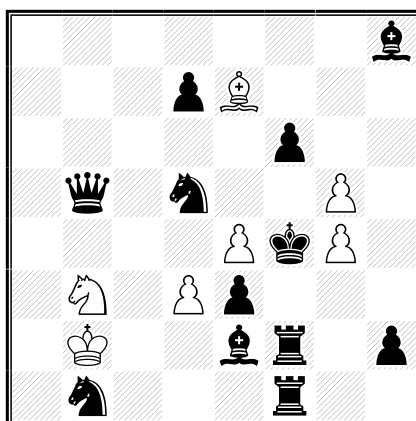
Nikos Siotis

10 C Springaren 1995



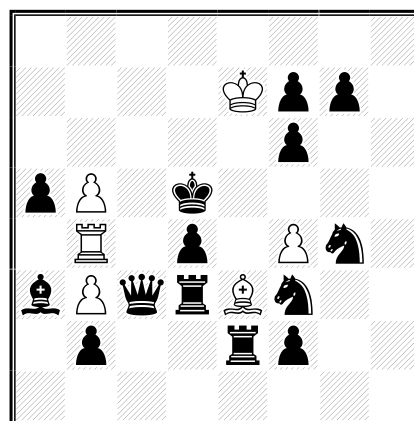
Jorge Kapros

2 Pr Gambit 1994-95



Toma Garai

2 HM Die Schwalbe 1983



h#3 b) ♖b2→e5 (5+12) h#3 b) ♙e7→g1 (7+12) h#3 2.1.1... (6+14)

Example E1 (Siotis)

a) 1.Se5 Sd1 **2.Sc4+** Sc3 3.e5 Se4#

b) 1.Ba6 Sac6 **2.Bxb5+** Sa5 3.Sa6 Sb7#

Example E2 (Kapros)

a) **1.fxg5+** Ka2 2.Bb2 Sd4 3.Bxg4 Bd6#

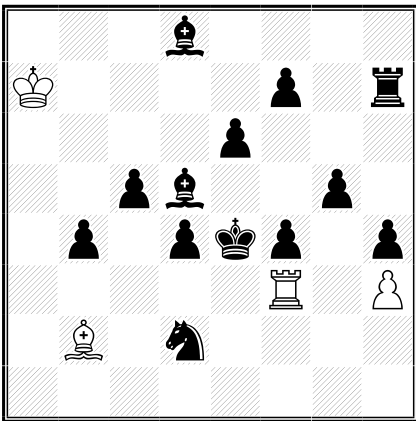
b) **1.Bxg4+** Ra1 2.Rb2 Sd2 3.fxg5 Bxh2#

Example E3 (Garai)

1.Ke4 Bxd4 **2.Kxf4+** Be5+ 3.Ke3 Bf4#

1.Kc5 Rxd4 **2.Kxb5+** Rd6 3.Kb4 Rb6#

Toma Garai
Sahmatu Pasaulyje 1991

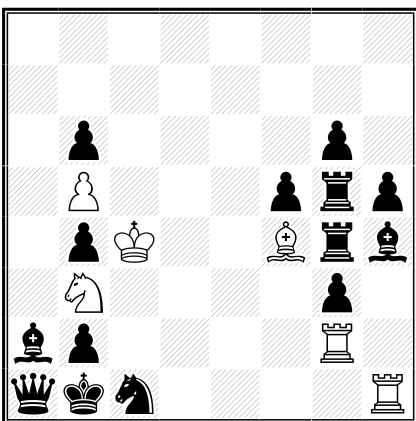


Example E4

- a) 1.Ke5 Rd3 2.Be4 Rxd4 **3.f5+ Rd7#**
 b) 1.Kf5 Bc1 2.Se4 Bxf4 **3.g6+ Bc7#**

h#3 b) ♞f7→g7 (4+13)

Roman Zalokotsky
Evgeny Bogdanov
C feenschach 1983



Example E5 (Zalokotsky, Bogdanov)

- 1.Rxf4+ Kd5 2.Rc4 Sxc1 **3.Rcg4+ Sb3#**
 1.Bxb3+ Kxb4 2.Bc4 Bxc1 **3.Ba2+ Bf4#**

h#3 2.1.1... (6+14)

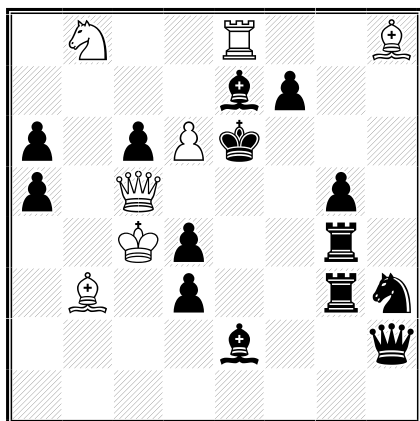
SECTION F: SELFMATES

Judging countries: Bulgaria, Czech Republic, Germany, Slovakia, Ukraine

Reserves: Croatia

Theme: In a selfmate in 2 to 6 moves, at least two variations end with Black mating move made to the same square, played by different black pieces. The threat may be treated as a thematic variation.

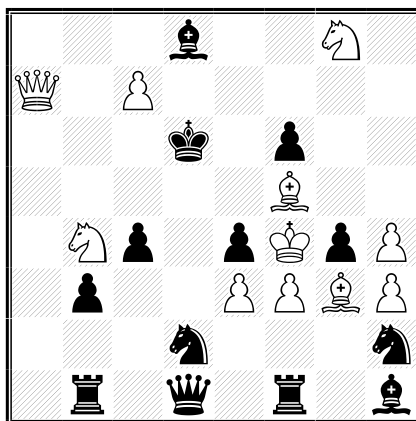
Zoltán Labai
3 HM Sakkélet 1989



s#2

(7+14)

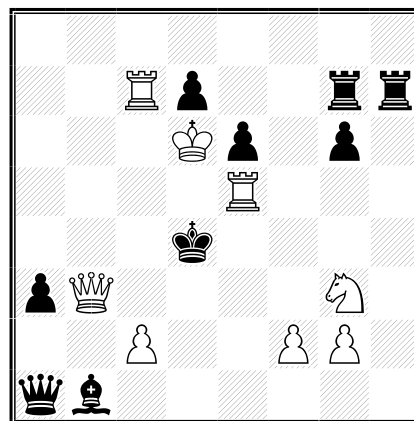
Shergili Sukhitashvili
Schach 1968



s#2

(11+13)

Živko Janevski
1 C Orbit 2013



s#3

(8+9)

Example F1 (Labai)

1.d7! [2.Qd5+ cxd5#]

1...Sf4 2.Kxd4+ **Sd5#**

1...Ff3 2.Kxd3+ **Bd5#**

Example F2 (Sukhitashvili)

1.Qa5! [2.Qe5+ fxe5#]

1...Shxf3 2.Kxg4+ **Se5#**

1...Sdxf3 2.Kxe4+ **Se5#**

1...Bxc7 2.Qc5+ Kxc5#

Example F3 (Janevski)

1.Re~? [2.Se2+ Ke4 3.Re5+ Qxe5#] Rh5!

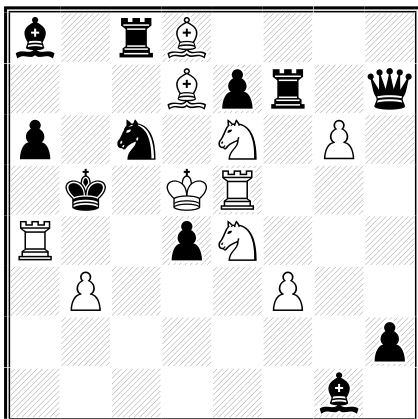
1.Rg5! [2.Se2+ Ke4 3.Re5+ Qxe5#]

1...Qa2 2.Rd5+ **A** (2.Qd5+?) exd5 3.Qxd5+ **B Qxd5#**

1...Rh5 2.Qd5+ **B** (2.Rd5+?) exd5 3.Rd5+ **A Rxd5#**

Bertil Gedda

2 Pr Schach-Echo 1979 (v)



s#3

(10+11)

Example F4

1.Ba5! [2.Rb4+ Kxa5 3.Kc4+ **Sxe5#**]

1...Qg7,Qh5,Qh8 2.Sd6+ exd6 3.Kxd6+ **Qxe5#**

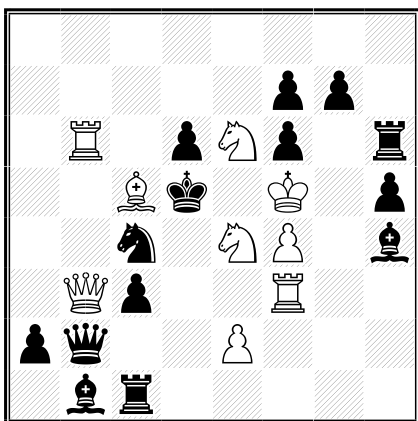
1...Rf5 2.Sc7+ Rxc7 3.Ke6+ **Rxe5#**

1...d3 2.Bxc6+ Rxc6 3.Sc3+ Rxc3#

1...Rd8 2.Sd6+ exd6 3.Bxc6+ Bxc6#

Vukota Nikoletić

Probleemblad 1990



s#4

(9+14)

Example F5

1.Ba3! [2.Sc7+ Kd4 3.Bc5+ dxc5 4.Rd6+ Sxd6#]

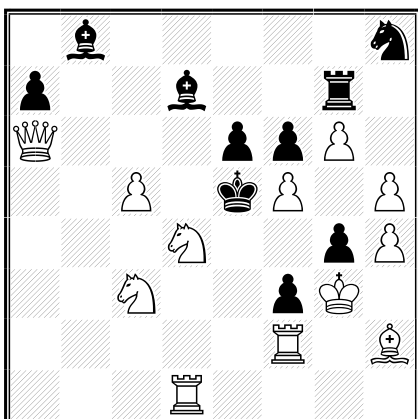
1...Rc2 2.Qb5+ Qxb5 3.Sc3+ Rxc3 4.e4+ **Bxe4#**

1...c2 2.Qd3+ Qd4 3.Sf6+ Bxf6 4.Qe4+ **Qxe4#**

1.Ld4? c2!

Peter Sickinger

1 Pr 3 DDR Championship
1985-86



s#4

(12+10)

Example F6

1.Qc4! [2.Sc6+ Bxc6 3.Qd4+ Kxf5+ 4.Qf4+ **Bxf4#**]

1...Sxg6 2.Qe2+ fxe2 3.Sc6+ Bxc6 4.Kxg4+ **Sf4#**

1...exf5 2.Qe6+ Bxe6 3.Sxf3+ gxf3 4.Kh3+ **f4#**

SECTION G: FAIRIES

Judging countries: Belarus, Bulgaria, Japan, Slovenia, Switzerland

Reserves: India

Theme: In a solution of a helpmate (h≠2, h≠2.5 or h≠3) with **Take&Make** fairy condition an "invisible capture" takes place.

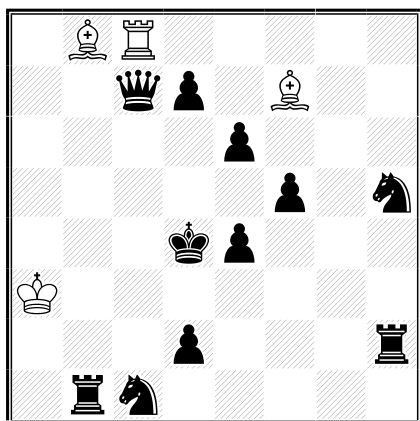
An "invisible capture" occurs when a unit standing on a square **A** can move to a square **B**, but in fact it arrives to square **B** in the "make" part of the move. The result looks like an orthodox move with the additional effect of disappearance of the captured piece. The theme may be implemented by White and/or Black. It is also considered thematic if **A** and **B** are the same square.

Set play, multi-solutions and twins are allowed, but not duplex, Polish-type twins (all units change color) or zero-positions. Only an orthodox set without extra ("promoted") pieces may be used. Any side may have two bishops on squares of the same color in the diagram position.

Take&Make: Having captured, a piece must immediately, as part of its move, play a non-capturing move in imitation of the captured unit from the capture square. If no such move is available, the capture is illegal. Promotion by capture occurs only when a pawn arrives on the promotion rank as the result of a Take&Make move. Checks are as in normal chess: after the notional capture of the checked K, the checking unit does not have to move away from the King's square.

Chris Feather

Fairings 2014



Example G1

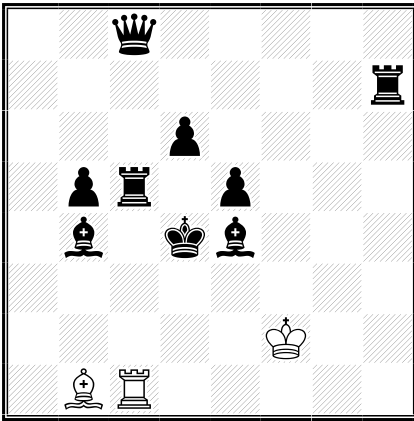
1.Qxc8(Qc2) Bxh2(Be2) 2.Kc3 Bxe6(Be5)≠

1.Qxb8(Qf4) Rxc1(Rd3)+ 2.Ke5 Bxh5(Bg7)≠

Theme by Black

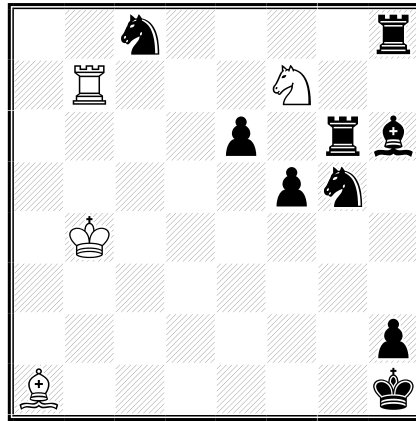
h≠2 2.1.1.1 (4+11)
Take & Make

Pierre Tritten
Sachmatija 2014



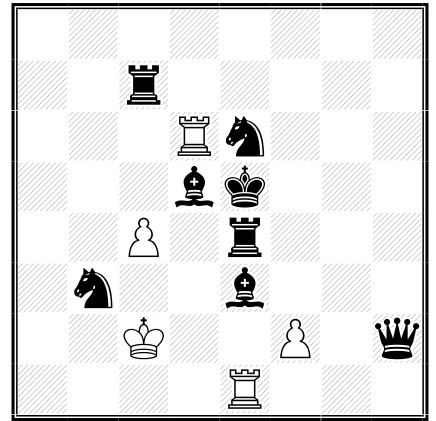
h±2 2.1.1.1 (3+9)
Take & Make

Pierre Tritten
Variantim 2013



h±2 2.1.1.1 (4+9)
Take & Make

Pierre Tritten
2 Pr Summer T
Springaren 2010-11



h±2 2.1.1.1 (5+8)
Take & Make

Example G2 (Tritten)

1.Bd5 **Rxc5(Rc2)** 2.Ke4 Rxc8(Rg4)±
1.Rd5 **Bxe4(Bc2)** 2.Kc5 Bxh7(Ba7)±

Theme by White

Example G3 (Tritten)

1.Bg7 Sxh8(Sh4) **2.Bxa1(Bg7)** Rxg7(Ra1)±
1.Rg7 Sxg5(Sh3) **2.Rxb7(Rg7)** Bxg7(Bb7)±

Theme by Black, with A=B

Example G4 (Tritten)

1.Qh1 Rxh1(Rh5)+ 2.Kd4 **cx d5(c4)**±
1.Rd4 Rxe6(Rf8) 2.Ke4 **fxe3(f2)**±

Theme by White, with A=B

SECTION H: RETROS

Judging countries: Finland, France, Germany, Japan, USA

Reserves: Sweden

Theme: In an orthodox proof game several pieces exchange their places.

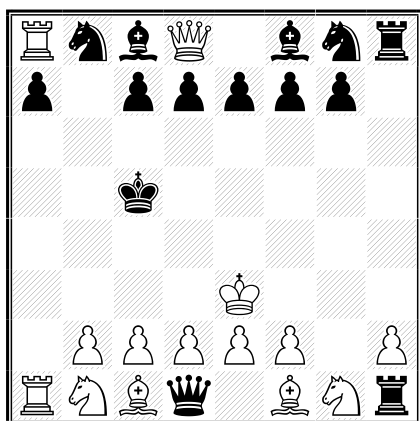
In position **A** in the course of proof game a number of pieces occupy a set of squares. Later in position **B** the same pieces occupy the same squares, but every piece stands on another square. It is allowed to have exchange between pieces of any color and any nature, direct or cyclic.

Position **A** may be an initial game array, though this is not required. Position **B** may be a final position of a proof game (that is, the diagram position), but this is also not required. For the purpose of this tournament the promoted piece is considered as a unit different from original pawn.

Multi-solutions and twins are allowed, but not zero-positions.

Günter Büsing

Problemkiste 1994



Example H1

A 1.a4 h5 2.a5 h4 3.a6 h3 4.axb7 h×g2 5.bxa8R gxh1R 6.Bh3 Ba6
7.Kf1 Qc8 8.Kg2 Kd8 9.Kf3 Qb7+ 10.Ke3 Qg2 11.Sf3 Kc8 12.Qg1
Qf1 13.Qg2 Kb7 14.Sg1+ Kb6 15.Qb7+ Kc5 16.Qc8 **Qd1** 17.**Qd8** **B**
Bc8 18.Bf1

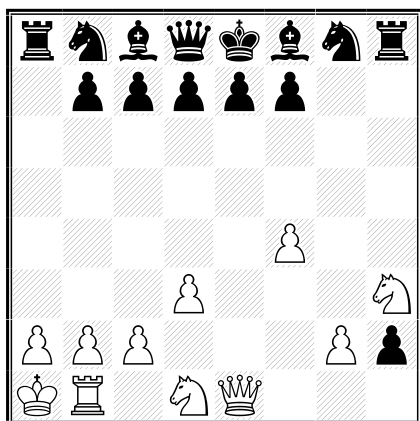
Exchange **Qd1↔Qd8**

PG in 17.5

(14+14)

Gligor Denkovski

3 C Die Schwalbe 2003



Example H2

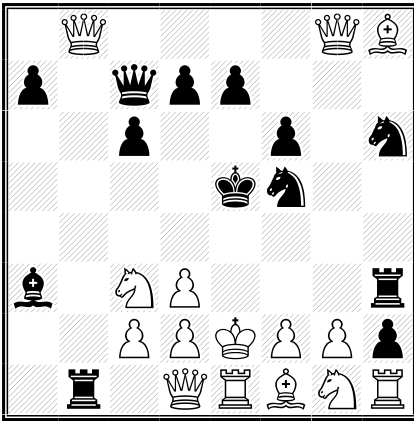
A 1.e4 h5 2.Qxh5 a5 3.Qxa5 Rxh2 4.d3 Rxh1 5.Bh6 gxh6 6.Sc3 h5
7.0-0-0 h4 8.Kb1 h3 **9.Ka1** h2 10.Sh3 Rxf1 **11.Rb1** Re1 **12.Sd1**
Rxe4 **13.Qe1** **B** Rh4 14.f4 Rh8

Cyclic exchange **Ke1→Ra1→Sb1→Qd1→Ke1**

PG in 14.0

(11+14)

Kostas Prentos
Andrey Frolkin
 The Problemist 2005



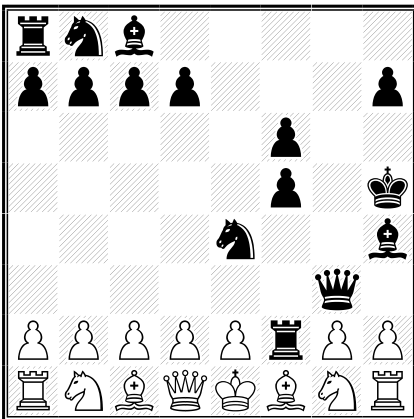
Example H3

1.h4 Sc6 2.h5 Sd4 3.h6 Sf5 4.hxg7 h5 5.a4 h4 6.a5 h3 7.a6 h2
 8.axb7 Rh3 9.b8Q Sgh6 10.g8Q **A** Ba6 11.Qg3 Bd3 12.exd3 Bg7
 13.Qdg4 Bxb2 14.Ke2 Ba3 15.Bb2 c6 16.Bh8 f6 17.Sc3 Kf7 18.Re1
 Ke6 19.Qb1 Rb8 **20.Qd1** Rb1 **21.Qb8** Qc7 **22.Qgg8+ B** Ke5.

Cyclic exchange **Qd1**→**Qg8**→**Qb8**→**Qd1**

PG in 22.0 (15+13)

Jorge J. Lois
Roberto Osorio
 Problemesis 2006



Example H4

A1 1.f4 Sf6 2.f5 Se4 3.f6 Rg8 4.fxe7 f5 5.Sh3 Kf7 6.e8S Be7 7.Sf2
 Bh4 8.Sf6 gxf6 **9.Rg1** Rg3 **10.Sh1 B1/A2** Rf3+ 11.Sg3 Rf2 12.Sh5
 Qg8 13.Sf4 Qg3 14.Sh3 Kg6 **15.Rh1** Kh5 **16.Sg1 B2**

Double exchange **Sg1**↔**Rh1**

PG in 15.5 (15+15)