

57th WORLD CONGRESS OF CHESS COMPOSITION

Berne, Switzerland August 23-30, 2014

12th Romanian Tzuica Tourney

Judges: Vlaicu Crişan & Eric Huber (Romania)

Theme: Help-selfmates (hs#n) with at least two solutions featuring mate by double check.

Definitions:

1. In a **help-selfmate** problem in 'n' moves (denoted hs#n), White starts and Black collaborates with White in order to reach a position of s#1 (selfmate in one move) at move 'n' (the last move).

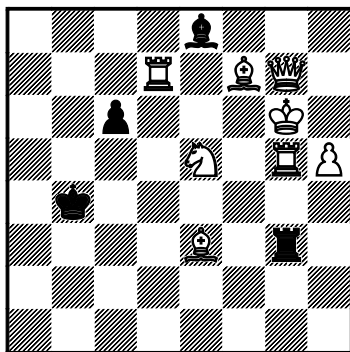
2. **Double check:** Two pieces check the opposite King.

In this tourney, we will accept and welcome mates by **multiple** check.

All fairy pieces and conditions are accepted, provided that the problem can be checked by a known solving program.

Example 1 for Orthodox section

Vlaicu Crişan
6578, Phénix 222/2012
dedicated to Denis Blondel



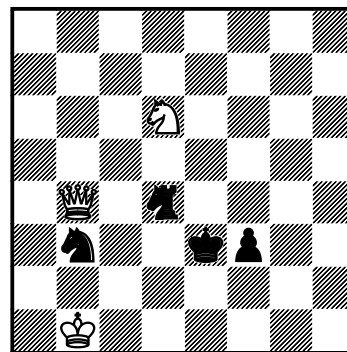
hs#4 (8 + 4)
b) bPc6→d3

A: 1.Bc1 Ra3 2.Re7 Ra6 3.Sxc6+ Bxc6
4.Re4+ **Bxe4#**

B: 1.Ra7 Ba4 2.Bf4 Bc2 3.Sxd3+ Rxd3
4.Bd6+ **Rxd6#**

Example 2 for Fairy Section

Vlaicu Crişan & Eric Huber
Prize, Quartz TT6 2004



hs#3 2 sol. (3 + 4)
Augsburg, Circe
♞ = (R+S)

1.Qd6(=Q+S) Sc5 2.Kc1 (R+S)c6
3.(Q+S)d3+ **Sxd3(+wQd1,+wSb1)#**

1.Rxd4(Bb4;+bRh8,+bSb8) Rb8=(R+S)
2.Rd2 (R+S)xb4(+wBc1)
3.Bd2=(B+R)+ **Sxd2(+wRa1,+wBc1)#**

Prizes in bottles of Tzuica

The tourney is open worldwide, however the prizes for congress participants only.

Please send entries to Eric Huber by e-mail at hubereric@yahoo.fr until August 24th, or during Congress to the Romanian delegate Dinu-Ioan Nicula until Wednesday, August 27th, 8 p.m.