

SPIŠSKÁ BOROVICA
THE 26-TH THEME TOURNEY C 28.8.2014

is announced for any kind of problems in 2 moves with antagonistic stipulation (#2, =2, S#2, R=2, etc...). Twins, multiple solutions, promoted pieces and also all kinds of fairy pieces and/or conditions are allowed.

The following **theme** is required:

At least one variation, in which the **defence** and **mate** are played to **neighbouring squares**.

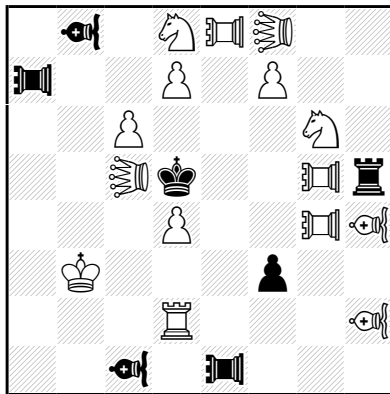
EXAMPLE

Michel CAILLAUD

Juraj LÖRINC

StrateGems 2003

1st Prize



1...Ke4 2.Sf4#
1...Kd6 2.Se7#

1.Llc7? [2.Se7#]
1...Ke4 2.Se5#
 1...Kd6 2.Sf4#
 1...BLe3!

1.Lle3! [2.Sf4#]
 1...Ke4 2.Se7#
1...Kd6 2.Se5#

#2 (15+7) C+

= Bishop-Lion

= Lion

= Rook-Lion

(In the example, thematic variations are shown in bold letters.)

Important: Only computer-tested problems (C+) will be accepted.

You may also send me the entry by e-mail to peter.gvozdjak@gmail.com.

In such case it should be received latest by 18th August.

At the congress please hand your problems to the judge until **Thursday, 8.00 P.M.**

Judge: P. Gvozdjak.

(The tourney is open worldwide, however the prizes for congress participants only.)