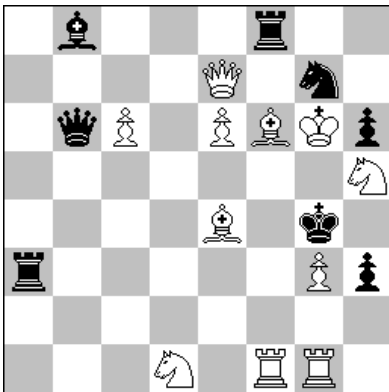


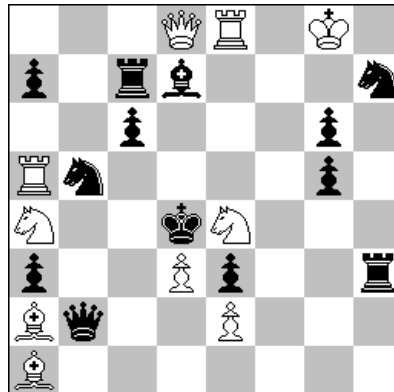
# 21. Schweizerische Lösungsmeisterschaft 2005

Kategorie: Elite

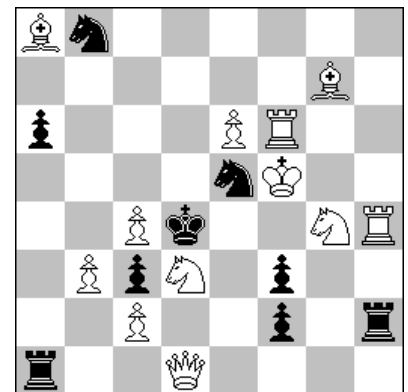
1. RUNDE in 30 min.



2#

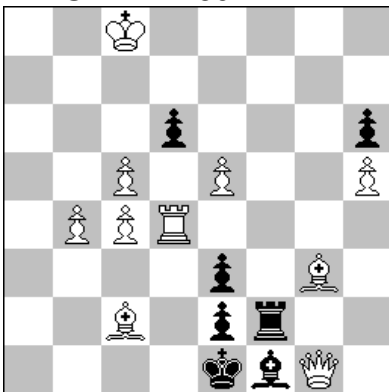


2#

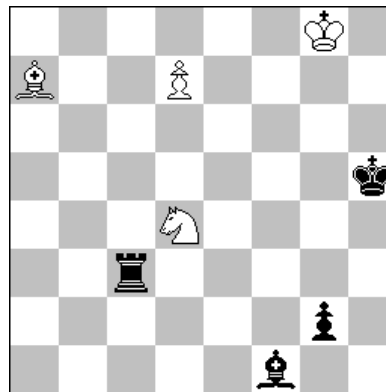


2#

2. RUNDE in 60 min.

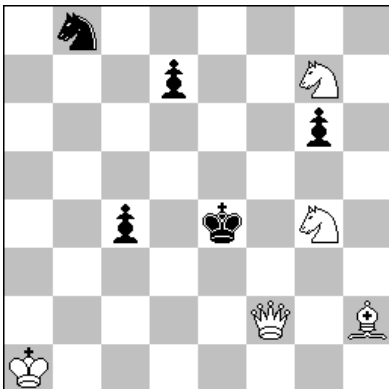


4#

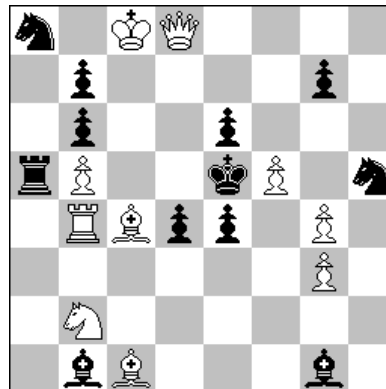


Weiss gewinnt

3. RUNDE in 45 min.

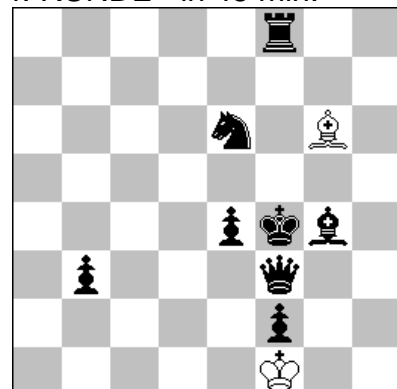


3#

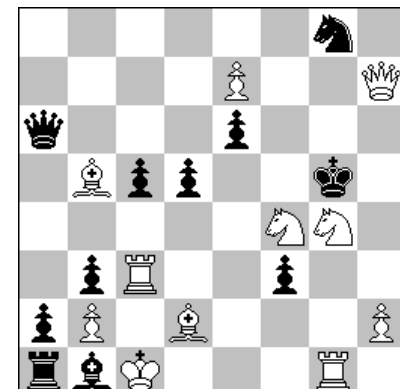


3#

4. RUNDE in 45 min.



H3# 3 Lösungen



S3#